

## Wireless, thermostatic TRV head

Manual for models:  
TRV10RFM, TRV10RAM and TRV28RFM



QUICK GUIDE



## INTRODUCTION

The TRV thermostatic head is controlled through wireless ZigBee communication protocol. It can replace classic, manual thermostatic head in a very quick and easy way. For proper operation of the TRV head it is necessary to synchronize it correctly with wireless thermostat using the CO10RF coordinator or UGE600 Internet gateway (all devices are sold separately). TRV head paired with the iT600RF series digital thermostats (e.g. SQ610RF, SQ610, VS20WRF, VS10WRF) ensures comfort within the whole room, not just in the radiator area.

## PRODUCT COMPLIANCE

This product complies with the essential requirements and other relevant provisions of Directives 2014/53/EU, 2015/863/EU. The full text of the EU Declaration of Conformity is available at the following internet address: [www.saluslegal.com](http://www.saluslegal.com).

(φ)2405-2480MHz; <14dBm

## SAFETY INFORMATION

Use in accordance to national and EU regulations. Use the device as intended, keeping it in dry condition. Product for indoor use only. Installation must be carried out by a qualified person in accordance to national and EU regulations.

## BOX CONTENT

### TRV10RFM Pack



TRV10RFM



Adapter

### TRV28RAM Pack



TRV28RFM



Metal Washer

### TRV10RAM Pack



TRV10RAM



Allen Key



Manual



2 AA Batteries

## GENERAL INFORMATION

The TRV head is a modulating device. This means that the valve can be gradually closed or opened, depending on the current room temperature measured by thermostat and the setpoint temperature.



**Note:** One thermostat can control up to 6 TRV heads within one room.

To achieve the best possible results in cooperation between the thermostat and the heating source, it is recommended to use the RX10RF receiver. RX10RF turns on the heat source depending on the demand signal sent by thermostat. More informations about RX10RF receiver is included in its user manual.

## ADDITIONAL FUNCTIONS

### Frost protection mode

When valve is manually closed, the TRV head automatically activates frost protection mode. Setpoint temperature of the frost protection mode is set on the thermostat. This function is activated when the room temperature drops below the frost protection setpoint temperature set on the thermostat. TRV head automatically maintains setpoint temperature if there is communication between TRV head and thermostat.

### Open window function

TRV head checks the speed of temperature drop in the room. If the temperature drop is fast, it is assumed that in the room has been opened window. The function is active when the TRV head communicates with thermostat, is in automatic mode and the batteries are not discharged.

### Protection against scale deposits

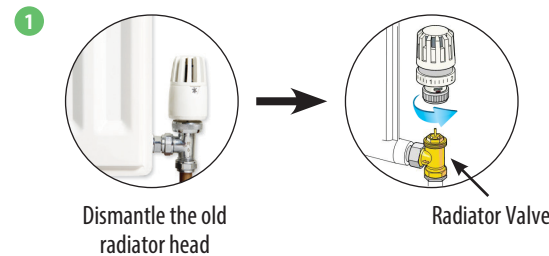
Do not leave the valve open for a long time because it can cause scale deposits on it. TRV head has a protection function against scale deposits. It starts to opening automatically once every 14 days if no valve movement is detected. Protection will also work no matter if TRV head is in auto mode or manual mode.

## TECHNICAL INFORMATION

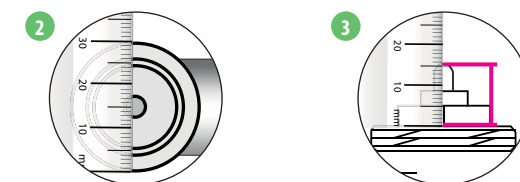
Model	TRV10RFM / TRV28RFM / TRV10RAM
Type	Wireless, thermostatic TRV head M30 x 1.5 / M28 x 1.5
LED signaling	Tri-color LED (red/green/orange)
Adaptation with a valve	Automatic
Power supply	2 x AA batteries
Control method	Modulation
Communication	Wireless, ZigBee 2.4 GHz
Operating temperature	0 to 45°C
Storage temperature	-20 to 60°C
Ambient humidity	5 to 95% RH
IP protection level	IP30
Dimensions [mm]	H=88.6, Ø=51

## CHECKING COMPATIBILITY WITH THE HEATING SYSTEM

TRV head is compatible with most of the thermostatic valves available on the market, however, before installation, please check whether the valve is suitable for use with the TRV head.



**Note:** If all valve dimensions are consistent with those given below, then the TRV head will be compatible. If there are dimension differences, contact us or the installer to find replacement for the valve.

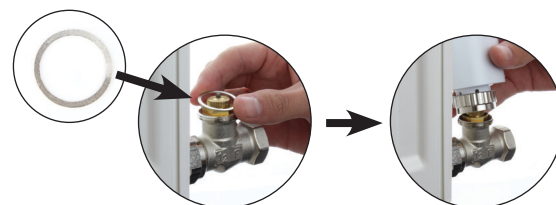


Measure the thread diameter (It must measure 30mm if you are fitting a TRV10RFM or 28mm if you are fitting a TRV28RFM valve)

Measure the pin length of the valve when it is in the open position. (It must measure between 13-15mm for TRV10RFM and between 10-11mm for TRV28RFM.)

## TRV28RFM HEAD INSTALLATION

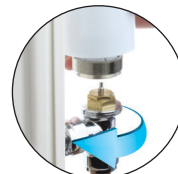
For MMA or Herz M28x1,5 thermostatic valves make sure you have a metal washer as shown in the picture.



**Note:** For the Comap valve with M28 thread you do not need to mount a metal washer.

## TRV10RFM HEAD INSTALLATION

For a standard thermostatic valve with M30x1,5 thread (e.g. Oventrop, Honeywell, TA, Heimeier) TRV10RFM head installation looks like as shown in the picture.



## TRV HEAD INSTALLATION ON THE DANFOSS RA VALVE

When mounting the TRV10RFM head on the Danfoss RA valve (see picture), please use the RA adapter included with the head. However, to install the TRV10RAM head it is necessary to use the Allen Wrench key.



### TRV10RFM HEAT MOUNTING

Push the RA adaptor onto the Danfoss RA valve



Tight RA adapter and screw TRV10RFM head on it.

### TRV10RAM HEAT MOUNTING

Place TRV head on the valve.



Assembly to the valve and tighten only 2 out of 4 screws.

## TRV HEAD SETUP



Mount the TRV head on the valve



Remove the battery cover located on the side of the device.



Insert the batteries according to the markings and close the battery cover.



The LED will start blinking green / red informing about the software version.

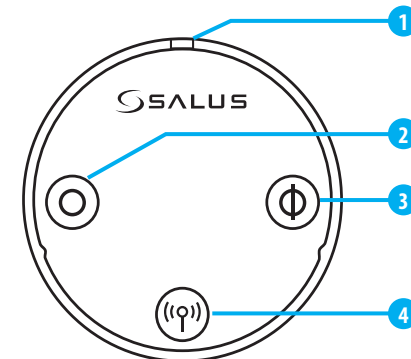


Press any button to start the adaptation process of TRV head with thermostatic valve. The process takes up to 5 minutes.



When the LED goes out and TRV head does not make any sounds, adaptation process is finished. Equipment is ready for pairing with thermostat.

## USER INTERFACE



1	LED diode (indicates device status)
2	Opening the head / indication of the device status
3	Closing the head / indication of the device status
4	Pairing button

## BUTTONS FUNCTION

**Note:** Buttons lock itself automatically after 5 minutes from the last one keystroke.

To do this...	Press the...
...pair with thermostat	...pairing button (φ) for 10 seconds
...lock/unlock the buttons	...pairing (φ) and close (⊕) buttons together for 5 seconds
...manually open the valve	...opening button (⊙) for 5 seconds.
...manually close the valve	...closing button (⊕) for 5 seconds.
...enter the automatic mode	...shortly pairing button (φ)
...remove the head from the ZigBee network	...pairing button (φ) for 10 seconds
...restore factory default settings	...open (⊙), pairing (φ) and close (⊕) buttons together for 5 seconds

## CHOOSE THE TYPE OF COORDINATOR FOR ZIGBEE NETWORK

Choose one type of ZigBee network coordinator and prepare it for work with iT600 series devices:

• Online - system is connected to the Internet via an Internet gateway **UGE600** or **UG800**



or

• Offline - with an option of connecting system to the Internet using a gateway **UGE600** or **UG800**



or

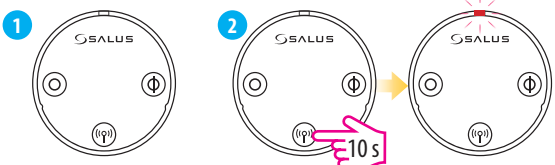
• Offline - by using **CO10RF** coordinator - no possible to connect system to the Internet



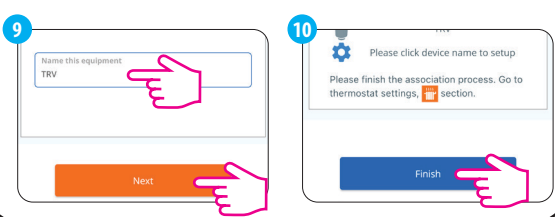
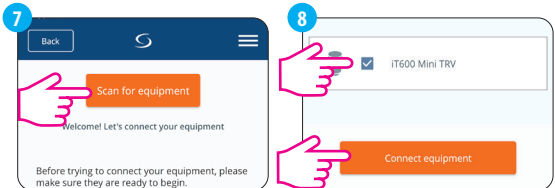
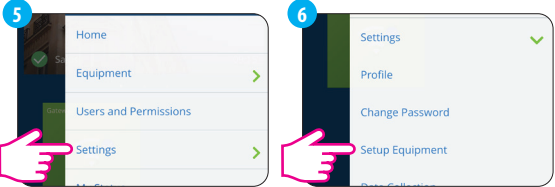


THERMOSTAT PAIRING WITH THE TRV HEAD IN ONLINE MODE

**WARNING!** You can connect up to 6 TRV heads to one regulator!



Install the TRV head on the valve according to the instructions on the previous page. Press and hold the pairing button for 10 seconds, the diode on the TRV head should start flashing in red.

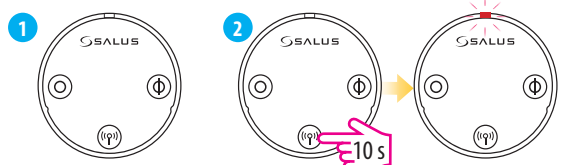


LED diode on TRV head flashes in orange. Now, the TRV head needs to be paired with the thermostat. **Note:** TRV head and thermostat must be in the same heating zone!

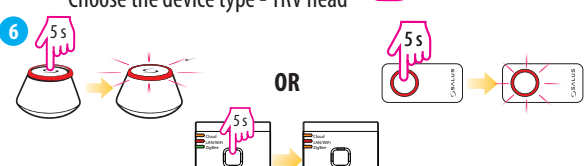
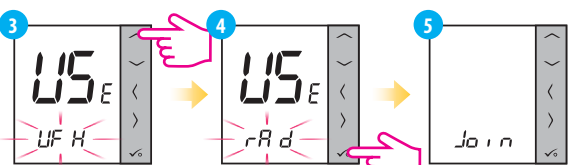


VS THERMOSTAT PAIRING WITH THE TRV HEAD IN OFFLINE MODE

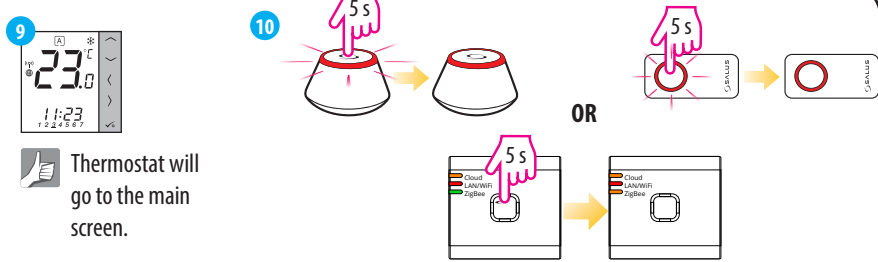
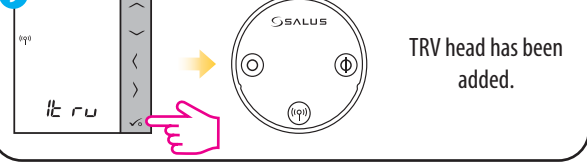
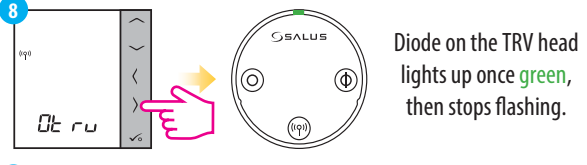
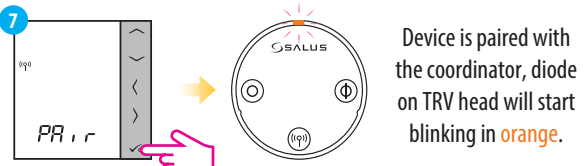
**WARNING!** You can connect up to 6 TRV heads to one thermostat!



Install the TRV head on the valve according to the instructions on the previous page. Press and hold the pairing button for 10 seconds, the diode on the TRV head should start flashing in red.

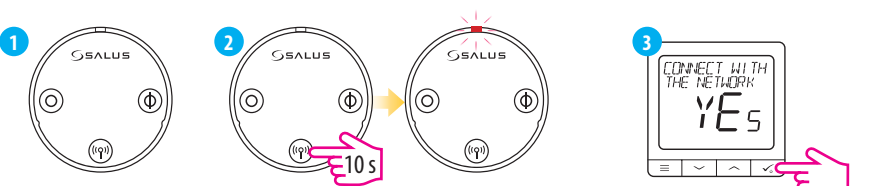


**WARNING!** Do not use the CO10RF coordinator together with UGE600!

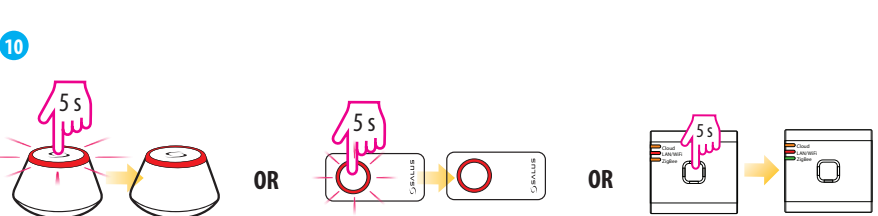
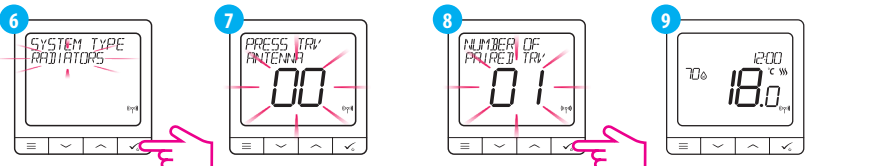
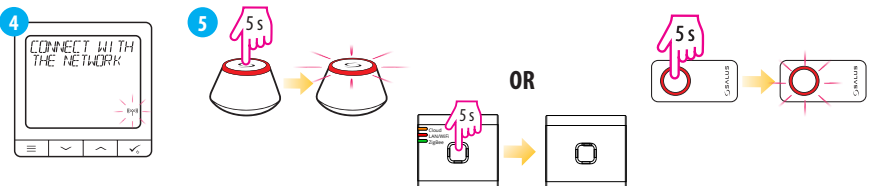


SQ THERMOSTAT PAIRING WITH THE TRV HEAD IN OFFLINE MODE

**WARNING!** You can connect up to 6 TRV heads to one thermostat!

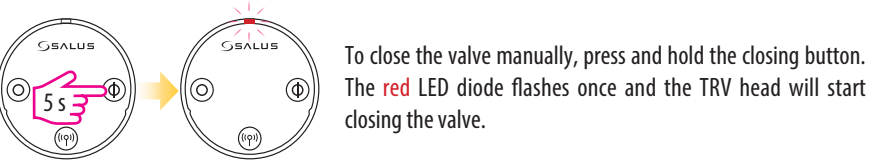
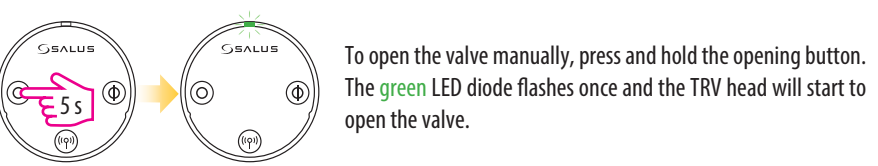


Install the TRV head on the valve according to the instructions on the previous page. Press and hold the pairing button for 10 seconds, the diode on the TRV head should start flashing in red.



MANUAL MODE

To open or close the TRV head in manual mode, follow the procedure described below. If the steps described below do not bring any results it means that probably the TRV head buttons are locked and they should be unlocked first.



**Note:** To exit the manual mode and go back to auto mode - press once the pairing button (antenna). The red LED diode will flash once, indicating return to auto mode.

LED DIODE INDICATIONS

When...	TRV Status	LED diode...	Valve
...power supplied	TRV head indicates the software version	...alternately flashes red / green indicating the software version. A more detailed description is in „TRV head setup” section on the previous page.	
...TRV head adapts to the valve		... flashes in green, then red and it switches off when the adaptation process has been done. When the LED will continue to flash red it means that adaptation process failed.	
...TRV head has been added to the network.		... flashes in orange (has been added to the network). TRV head should be paired now with thermostat.	closed
..TRV head is added to the network, but it is not paired with thermostat	Auto mode	...flashes in orange	closed
	TRV head is open in manual mode	...flashes twice in green when pressed the opening or closing button.	100% open
	TRV head is closed in manual mode	...flashes once in green after a short press of the opening or closing button.	closed
...TRV head is in normal operating mode	Auto mode	...flashes once in green after a short press of the opening or closing button.	100% open
	Auto mode	...flashes once in red after short press of the opening or closing button.	closed
	TRV head is open in manual mode	....flashes twice in green after short press of the opening or closing button.	100% open
	TRV head is closed in manual mode	...flashes twice in red after short press of the opening or closing button.	closed
	The Window Open function is active	...flashes in green and red 2 times every 10 seconds.	closed
...TRV head is paired with thermostat.	Auto mode	...does not light up.	
...TRV head is removed from the network.		...flashes once in orange (TRV head is removed from the coordinator’s memory) and then flashes in red.	
...identification of the TRV head is turned on		...flashes in green for a maximum of 10 minutes.	
... wireless communication with the TRV head is lost	Auto mode	...flashing alternately in green and red after a short press of the opening or closing button.	
	TRV head is open in manual mode	...flashes twice in green after a short press of the opening or closing button.	100% open
	TRV head is closed in manual mode	...flashes twice in red after a short press of the opening or closing button.	closed
...when battery power is too low		...flashes three times in red every 10 seconds (or less often if the batteries in the TRV head are very weak).	25% open
...an error occurred during TRV head assembly		... flashes alternately in red and green.	

SALUS Controls plc  
Units 8-10, Northfield Business Park,  
Forge Way, Parkgate, Rotherham,  
S60 1SD

SALUS Controls GmbH,  
Dieselstrasse 34,  
63165 Mülheim am Main  
support@salus-controls.de

T: +44 (0) 1226 323961  
E: sales@salus-tech.com



www.saluscontrols.com

SALUS Controls is a member of the Computime Group  
Maintaining a policy of continuous product development SALUS Controls plc reserves the right to change specification, design and materials of products listed in this brochure without prior notice.

